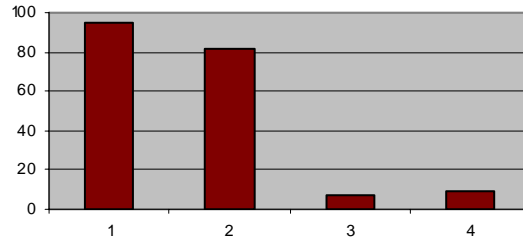


NFCC Student Survey
Spring 2006
 (192 submissions)

Question 1

I am a:

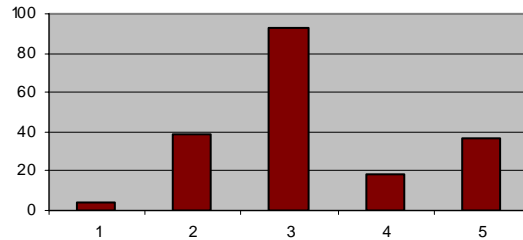
1	Full-time academic student (taking at least 12 credit hours)	95 (49%)
2	Part-time academic student (taking less than 12 credit hours)	82 (42%)
3	Vocational student (enrolled in a certificate program)	7 (4%)
4	Other	9 (5%)



Question 2

Which of the following most closely matches your current class schedule?

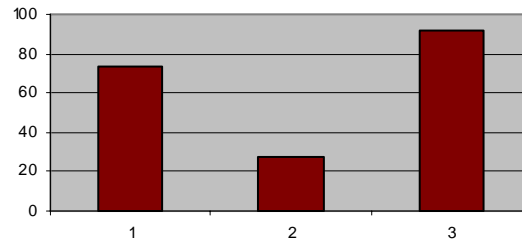
1	Attend five days a week (Monday - Friday)	4 (2%)
2	Attend four days a week (Monday & Wednesday / Tuesday & Thursday)	39 (20%)
3	Attend two days a week (Monday & Wednesday OR Tuesday & Thursday)	93 (49%)
4	Attend evenings only	18 (9%)
5	Takes online courses only	37 (19%)



Question 3

Which of the following most closely matches your course set-up?

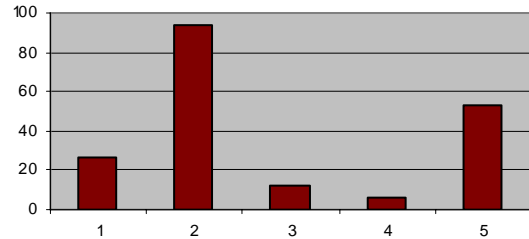
1	Face-to-face classes only (even though these may be supplemented online)	73 (38%)
2	Online classes only	28 (15%)
3	Combination of face-to-face and online courses	92 (48%)



Question 4

Which of the following schedule options do you prefer?

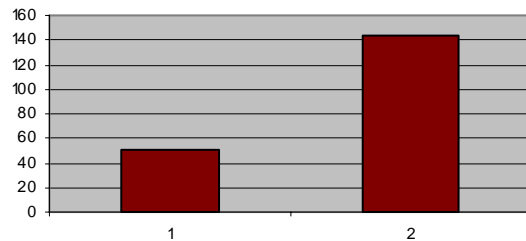
1	Monday, Wednesday, and Friday classes (50 minutes each)	27	(14%)
2	Monday / Wednesday, Tuesday / Thursday classes (1.25 hours each)	94	(49%)
3	Evening classes (one night a week / 3 hours each)	12	(6%)
4	Classes held 1 day a week (3 hours each)	6	(3%)
5	Online classes	53	(28%)



Question 5

Would you be interested in taking Friday only classes (3 hours each)?

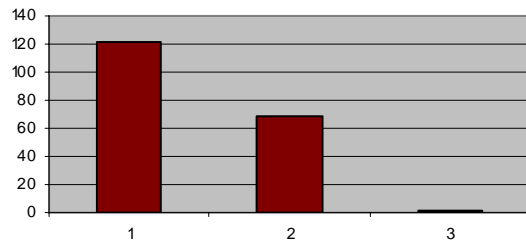
1	Yes	50	(26%)
2	No	143	(74%)



Question 6

When asked to use technology in your classes do you:

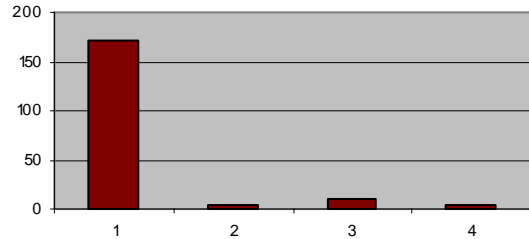
1	Feel comfortable using the technology with no assistance	122	(63%)
2	Feel comfortable using the technology with current available assistance (library, tutor labs, etc.)	69	(36%)
3	Do not feel comfortable using the technology	2	(1%)



Question 7

Which of the following best describes your access to technology?

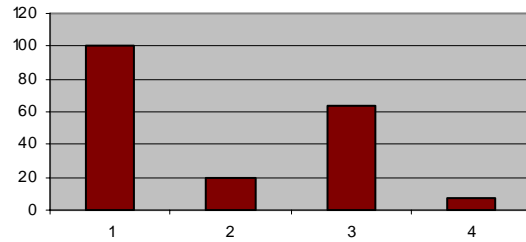
1	I have a computer at home with Internet access	172	(90%)
2	I have a computer at home without Internet access	4	(2%)
3	I do not have a computer at home but do have easy access to one	11	(6%)
4	The only computer access I have is on the NFCC campus	5	(3%)



Question 8

If you use a computer away from NFCC, which of the following best describes your Internet access?

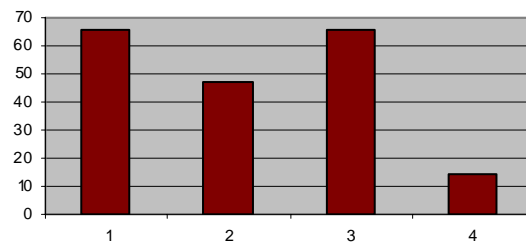
1	High Speed (DSL or cable)	101	(53%)
2	Dial-up (too slow to use for coursework)	20	(10%)
3	Dial-up (okay to use for coursework)	64	(33%)
4	Don't use	7	(4%)



Question 9

Which of the following do you use D2L for?

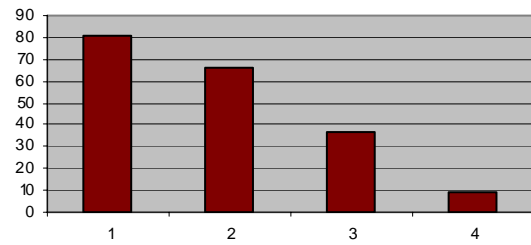
1	Online classes	66	(34%)
2	Supplemented face to face classes	47	(24%)
3	Combination online / face-to-face classes	66	(34%)
4	Email only	14	(7%)



Question 10

How often do you access your D2L account?

1	Every day	81	(42%)
2	3-4 times a week	66	(34%)
3	1-2 times a week	37	(19%)
4	Less than once a week	9	(5%)



Question 11

Comments were omitted to protect student confidentiality.